



Rodson Universal

www.rodson.com

info@rodson.com

Ref ac2246

KOBELCO CK2500-II

Year:	2009
Capacity:	250 t
Boom:	76.2 m
Jib:	30.48 m
Engine:	Hino
Winch:	2

Description

Tier III Engine

480 FPM Hoist Speed

Free-fall

Aux sheave

19 ton Ball

Anti-2-Block and LMI

CWT: 198,400 Rear / 52,900 Carbody

Self Assembly System

Air conditioning



Rodson Universal

www.rodson.com

info@rodson.com

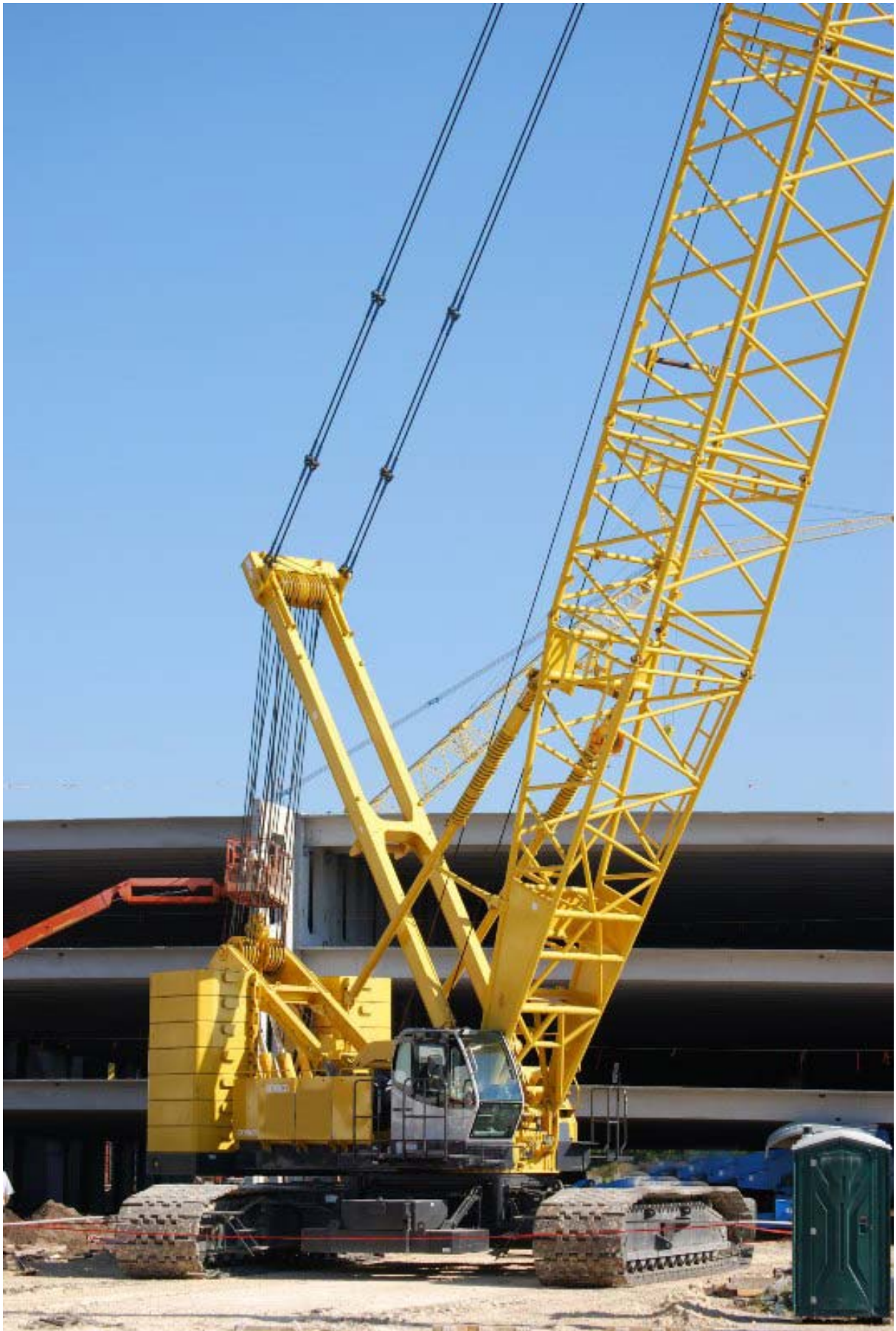




Rodson Universal

www.rodson.com

info@rodson.com





Rodson Universal

www.rodson.com

info@rodson.com





Rodson Universal

www.rodson.com

info@rodson.com

