



Rodson Universal

www.rodson.com

info@rodson.com

Ref ac2776

IHI CCH2500

Year:	2009
Capacity:	250 t
Boom:	81 m
Jib:	31 m
Swing speed:	1.7 pm
Counterweight:	87 t
Hook blocks capacity:	250 x 16
Hook blocks capacity:	25 x 2
Boom drum host:	18





Rodson Universal

www.rodson.com

info@rodson.com





Rodson Universal

www.rodson.com

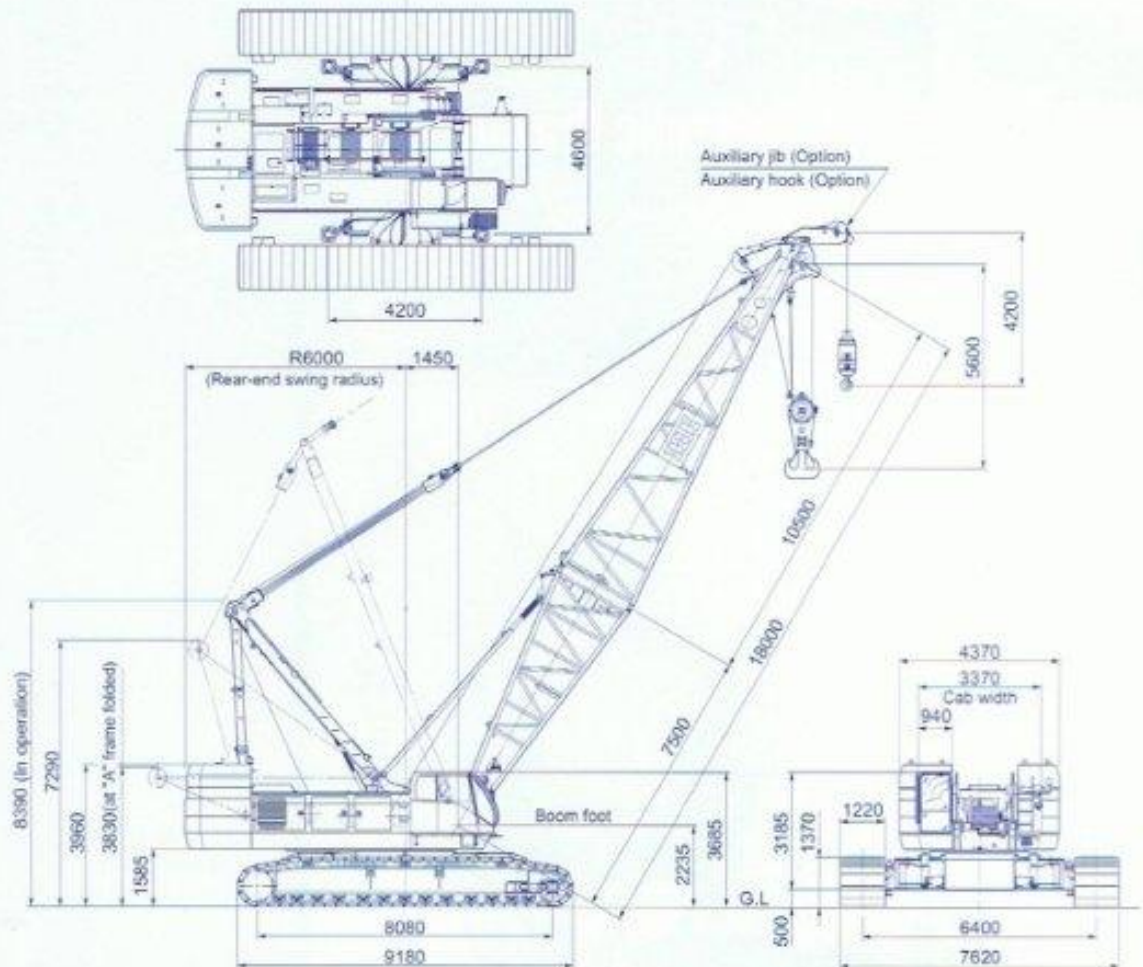
info@rodson.com



Crane

CCH2500

General Dimensions (with basic boom) (Unit : mm)



Specifications

Performance	
Swing speed	1.7rpm
Travel speed	0.9/0.5 km/hr
Climbability	30% (16.7°)
Engine	
Make	HINO Motors
Model	K13C-UV (with turbo) diesel engine
Type	8-cylinder, water cooled, overhead valve
Total piston displacement	12.88L
Rated output	374PS (2,000rpm (278kw/2000min ⁻¹))
Fuel tank capacity	490L
Battery	12V X 150AH X 2 pcs
Load hoist System (Main & Aux.)	
Hydraulic motor	Axial piston type
Reduction gear	Two-stage planetary gear
Hoist drum	2 grooved cylindrical drums on 2 individual shaft. Main/Auxiliary drum in same width, with Labus type groove.
Risks	Wet type multi-disk
Drum locks	Ratchet lock
Boom hoist System	
Motor	Axial piston type
Reduction gear	Three-stage planetary gear

Crane specifications

Max. lifting capacity (metric ton) x working radius (m)	250 X 5.0	
Max. boom length (m)	90	
Max. boom length, main (main+ jib boom) (m)	109(72+37)	
Rope speed	Main drum hoist/lowering (m/min)	* 120/80-55/28
	Aux. drum hoist/lowering (m/min)	* 120/80-55/28
	Boom drum hoist/lowering (m/min)	* 32-14 X 2
Parts lines	Hook block capacity (ton) x part line	250 X 16
	Hook block capacity (ton) x part line	25 X 2
	Boom drum hoist/lowering part line	18
Counterweight (ton)	87	
Total operating weight (with 18m basic boom) (ton)	Approx. 209.4	
Average ground bearing pressure (kPa) (kgf/cm ²)	(104) (1.06)	

* The rope speed changes depending on the load.

Crane

CCM2500

Rated lifting loads (87ton counterweight, 16ton weight for body)

Boom length(m) Working radius(m)	18	21	24	27	30	33	36	39	42	45	48	51	54
No. of Part line	16	14	14	12	11	10	9	9	9	9	7	7	6
5.0	250.0												
6.0	192.0	175.0											
7.0	163.7	163.0	158.0	150.0									
8.0	144.0	143.3	143.0	142.7	137.5	125.0							
9.0	128.4	127.8	127.5	127.2	125.2	125.0	112.5	112.5					
10.0	115.8	115.2	114.9	114.6	114.9	114.6	106.3	106.0	106.7	105.4			
12.0	89.8	89.5	89.4	89.2	89.7	89.5	89.6	89.4	89.1	86.1	86.0	85.7	75.0
14.0	72.2	72.0	71.9	71.6	72.1	71.9	71.9	71.7	71.4	71.3	71.3	69.9	69.8
16.0	60.3	60.0	59.8	59.5	60.0	59.7	59.8	59.6	59.3	59.1	59.1	58.8	58.6
18.0	50.3	51.2	51.0	50.7	51.2	50.9	50.9	50.7	50.4	50.3	50.2	49.9	49.7
20.0		44.4	44.4	44.0	44.5	44.2	44.2	44.0	43.6	43.5	43.4	43.1	42.9
22.0			39.1	38.8	39.2	38.9	38.9	38.7	38.3	38.2	38.1	37.8	37.6
24.0				34.6	34.9	34.6	34.6	34.4	34.0	33.9	33.8	33.4	33.3
26.0					31.5	31.1	31.1	30.8	30.5	30.3	30.2	29.9	29.7
28.0						28.2	28.1	27.9	27.5	27.4	27.3	26.9	26.8
30.0						25.7	25.6	25.4	25.0	24.8	24.7	24.4	24.3
32.0							23.5	23.2	22.8	22.7	22.6	22.3	22.1
34.0								21.4	21.0	20.8	20.7	20.4	20.3
36.0									19.4	19.2	19.1	18.8	18.7
38.0									18.0	17.8	17.7	17.4	17.2
40.0										16.5	16.4	16.1	15.9
42.0											15.3	15.0	14.8
44.0												13.9	13.8
46.0													12.8
48.0													12.0
50.0													11.8

Boom length(m) Working radius(m)	57	60	63	66	69	72	75	78	81	84	87	90
No. of Part line	6	6	6	5	5	4	4	4	3	3	3	2
10.0												
12.0	75.0											
14.0	69.6	69.6	69.4	62.5	62.5							
16.0	57.9	57.8	57.7	57.5	57.3	50.0	50.0	48.7	37.5			
18.0	49.7	49.4	48.9	48.6	48.5	48.4	47.7	45.5	37.5	37.5	37.4	25.0
20.0	42.9	42.6	42.5	42.4	41.8	41.7	41.6	41.4	37.5	37.5	34.8	25.0
22.0	37.5	37.2	37.2	37.0	36.7	36.6	36.3	36.1	35.9	34.8	32.3	25.0
24.0	33.2	33.0	32.8	32.6	32.3	32.2	32.1	31.9	31.8	31.5	29.9	25.0
26.0	29.6	29.4	29.3	29.1	28.8	28.7	28.6	28.3	28.1	28.0	27.7	24.4
28.0	26.7	26.5	26.3	26.1	25.9	26.2	25.6	25.4	25.1	25.0	24.8	22.6
30.0	24.1	24.0	23.8	23.5	23.4	24.0	23.6	23.3	22.6	22.5	22.2	21.1
32.0	21.9	21.8	21.6	21.3	21.2	21.8	21.6	21.4	21.1	20.3	20.0	19.7
34.0	20.0	20.0	19.7	19.5	19.3	19.9	19.6	19.4	19.3	18.9	18.2	17.9
36.0	18.4	18.4	18.1	17.9	17.7	18.2	17.9	17.7	17.5	17.2	16.5	16.3
38.0	16.9	16.9	16.6	16.4	16.2	16.7	16.4	16.2	16.0	15.7	15.0	14.8
40.0	15.6	15.6	15.3	15.1	14.9	15.4	15.0	14.8	14.7	14.4	14.1	13.5
42.0	14.5	14.5	14.2	14.0	13.8	14.1	13.8	13.6	13.4	13.1	12.9	12.3
44.0	13.4	13.4	13.1	12.9	12.7	13.0	12.7	12.5	12.3	12.0	11.6	11.3
46.0	12.5	12.5	12.2	12.0	11.8	12.0	11.7	11.5	11.3	11.0	10.6	10.3
48.0	11.7	11.6	11.3	11.1	10.9	11.1	10.8	10.6	10.4	10.1	9.7	9.3
50.0	10.9	10.9	10.5	10.3	10.1	10.3	10.0	9.8	9.6	9.2	8.9	8.4
52.0		10.1	9.8	9.6	9.4	9.6	9.2	9.0	8.7	8.5	8.0	7.6
54.0			9.2	9.0	8.7	8.9	8.4	8.2	7.9	7.8	7.2	6.9
56.0				8.6	8.3	8.0	8.1	7.7	7.4	7.2	6.5	6.2
58.0					7.8	7.5	7.4	7.0	6.7	6.5	6.6	5.8
60.0						6.9	6.6	6.3	6.1	5.8	5.9	5.3
62.0							6.2	5.7	5.5	5.2	5.3	4.7
64.0								5.6	5.3	5.1	4.7	4.1
66.0									4.8	4.6	4.1	3.6
68.0										4.1	3.8	3.1
70.0											3.3	2.6
72.0												2.2