



Rodson Universal Inc

www.rodson.com

info@rodson.com

Ref de1009

BRAND NEW SUBMERSIBLE BARGE

Delivery end of 2009

Principal Particulars

| | |
|---------------------------|-----------------------|
| Length over all | 136.00 M |
| Breadth moulded | 36.00 M |
| Depth moulded | 8.00 M |
| Design draft | 5.00 M |
| DWT | ca. 20,000 Ton |
| Lightweight | 5,800 Ton |
| Permissible deck pressure | 20 Ton/m ² |
| Free deck | 130.00 M |

Equipment

| Name | Specification | Quantity |
|---|--|----------|
| Generator | Cummins 150 kW, 415 V/3/50 Hz 1500 RPM, Electrical Starting | 1 |
| Ballast pump | 800 m ³ /h, 10 m head, self-priming | 2 |
| Ballast pipes | DN 350 | |
| Bilge and fire | DN 65 | |
| Air Vent | Vent duct from all the ballast tanks positioned in the lower bollard castings | |
| Bilge water pump | 65 m ³ /h – 30 m | 1 |
| F.W. pump | 30 m ³ /h – 20 m | 1 |
| Sludge pump | 15 m ³ /h – 20 m Gear Type | 1 |
| Oil water separator | 0.5 m ³ /h 15 ppm | 1 |
| Air compressor | 5 m ³ /h, 10 kg/cm ² 220L | 1 |
| Axial fan | 15000 m ³ /h, 3 kW 380/3/5 Hz | 1 |
| Level measurement system | Hehai systems | 1 |
| Main switchboard and distribution box | | 1 |
| Anchor windlass (fore ship) | Anchor chain diameter 52 mm Working load 115 KN Supporting load 666 KN Working speed 9 m/min Warping pull 75 KN Rope speed 9 m/min Rope diameter 48 mm Motor power 30/30/22 KW Power source AC 380 V 50 HZ | 2 |
| Anchor windlass (lower deck) (aft ship) | Anchor chain diameter 52 mm Working load 115 KN Supporting load 666 KN Working speed 9 m/min Warping pull 75 KN Motor power 30/30/22 KW Power source AC 380 V 50 Hz | 2 |



Rodson Universal Inc

www.rodson.com

info@rodson.com

| | | |
|------------------|---------------------------|---|
| Capstan | 50 KN | 2 |
| Life buoy | SDF 5556 2.5 KG | 4 |
| Co2 extinguisher | 9 Litres | 5 |
| Anchor | 5200 kg Flipper Delta | 4 |
| Anchor chain | 52 mm, 27.5 m x 20 length | 4 |
| Mooring rope | 80 mm, 220 m length | 2 |
| Fairlead | 350 mm | 6 |
| Panama chock | 400 x 350 | 8 |
| Towing bracket | 200 ton | 2 |

Electric equipment

| | | |
|------------------|-------------|---|
| Transformer | 15 kVA | 1 |
| Battery | 24 V 150 AH | 4 |
| Starting battery | | 2 |

Lighting

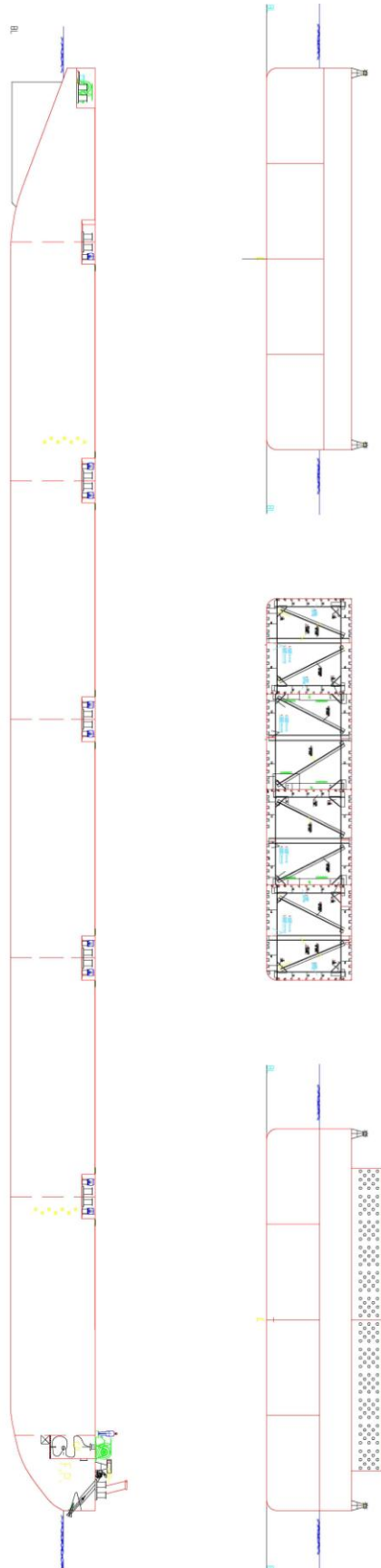
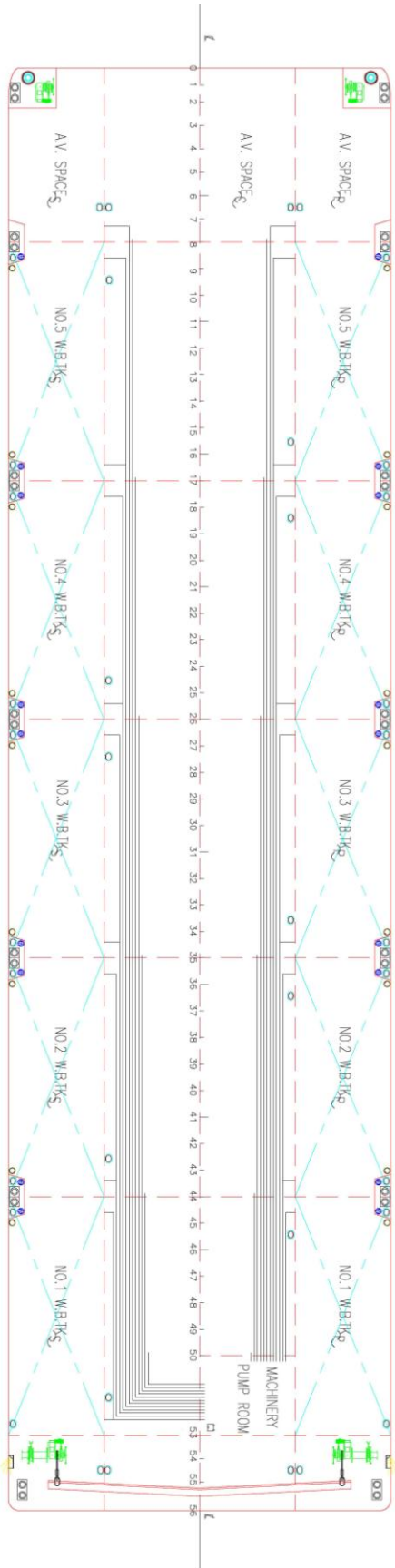
| | | |
|--------------------|--------------------|----|
| Pendant lamp | JCY 22-2 F | 15 |
| Pendant lamp white | JCY 22-2 F | 15 |
| Plastic socket | Z- 1 M | 14 |
| Port light | CXH2-10P 24V – 60W | 1 |
| Double layer | | |
| Star board light | CXH1-10P 24V – 60W | 1 |
| Stern light | CXH4-10P 24V – 60W | 1 |
| Anchor light | CXHP-10P 24V – 60W | 2 |
| NUC | | 2 |



Rodson Universal Inc

www.rodson.com

info@rodson.com





Rodson Universal Inc

www.rodson.com

info@rodson.com

