



Rodson Universal

www.rodson.com

info@rodson.com

Ref dg1225

Catamaran Crane

Year Built 1994

Tonnage:

GRT 506 tons
NRT 151 tons

Capacities:

4 x hooks: 700 tons
1 x hooks: 175 tons

Dimensions:

Length overall: 55 m
Beam overall: 26.10 m
Depth moulded: 3.10 m
Draft light: 1.10 m
Draft loaded 700t: 2.50 m

Anchor pillars:

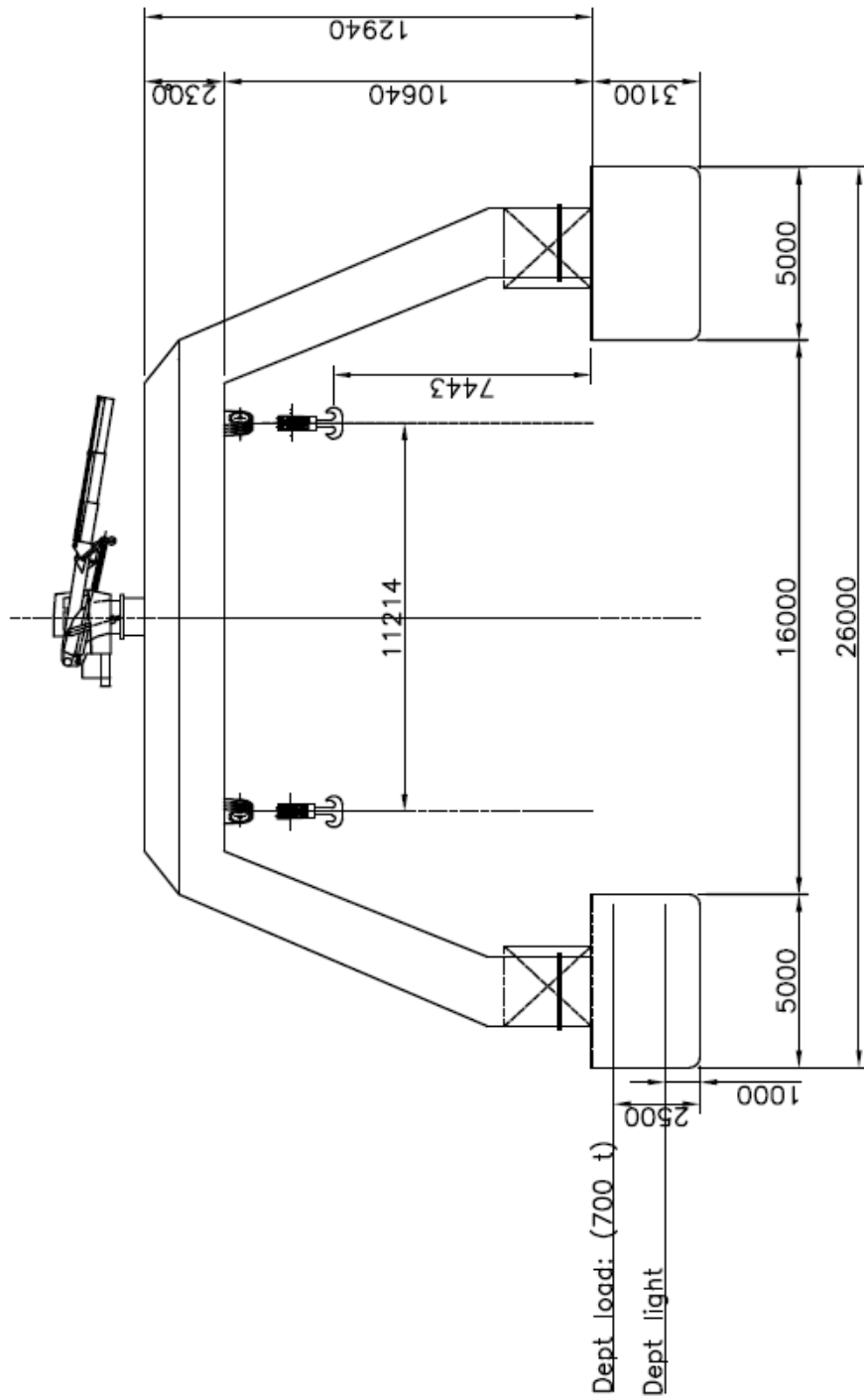
2 x Hydraulic legs: Length: 16 m each
Max operational waterdept: 10 m

Rigging Crane:

Type: EFFER E 100
Capacity: 28 T x M

The hook are in fix position and can not travel



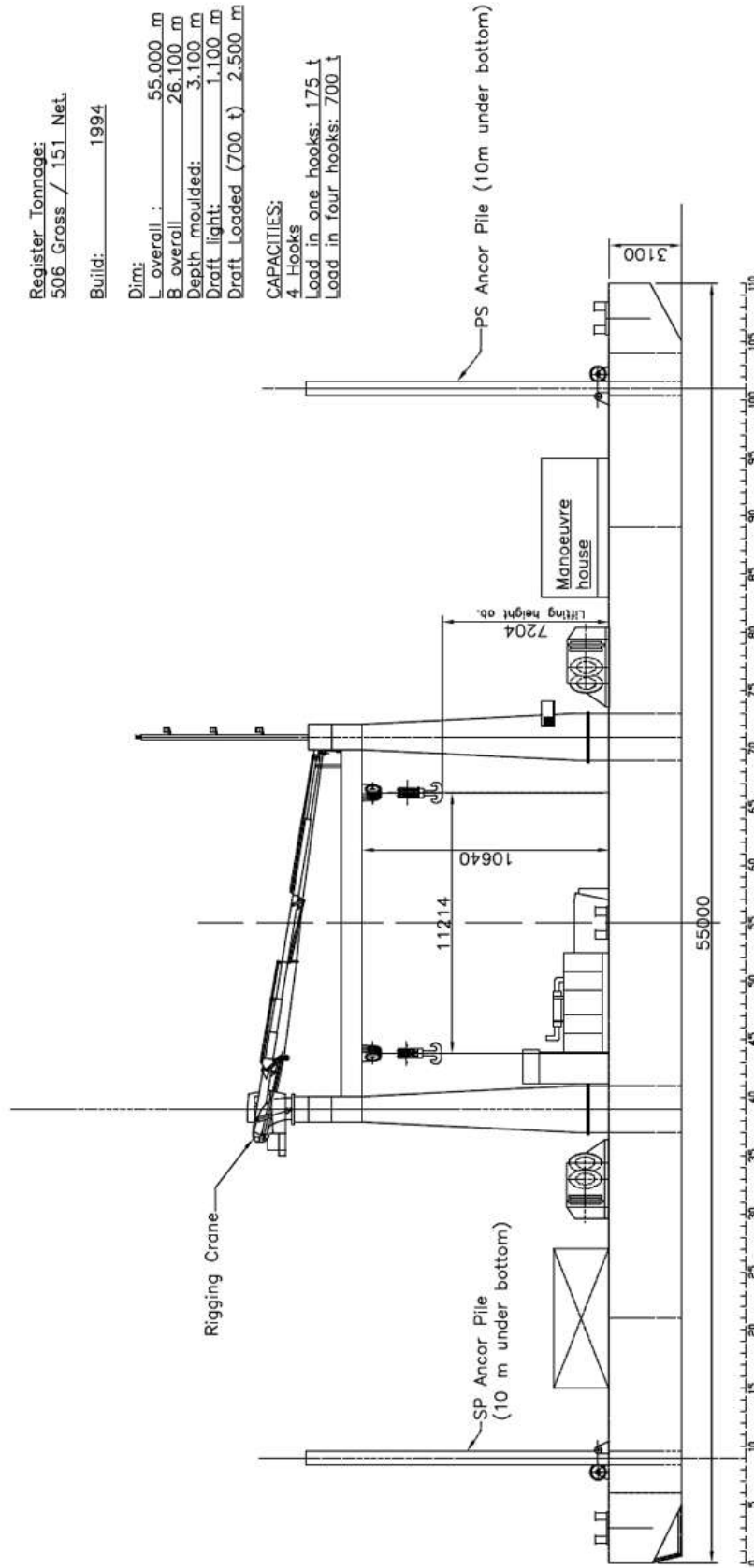


NOTES:

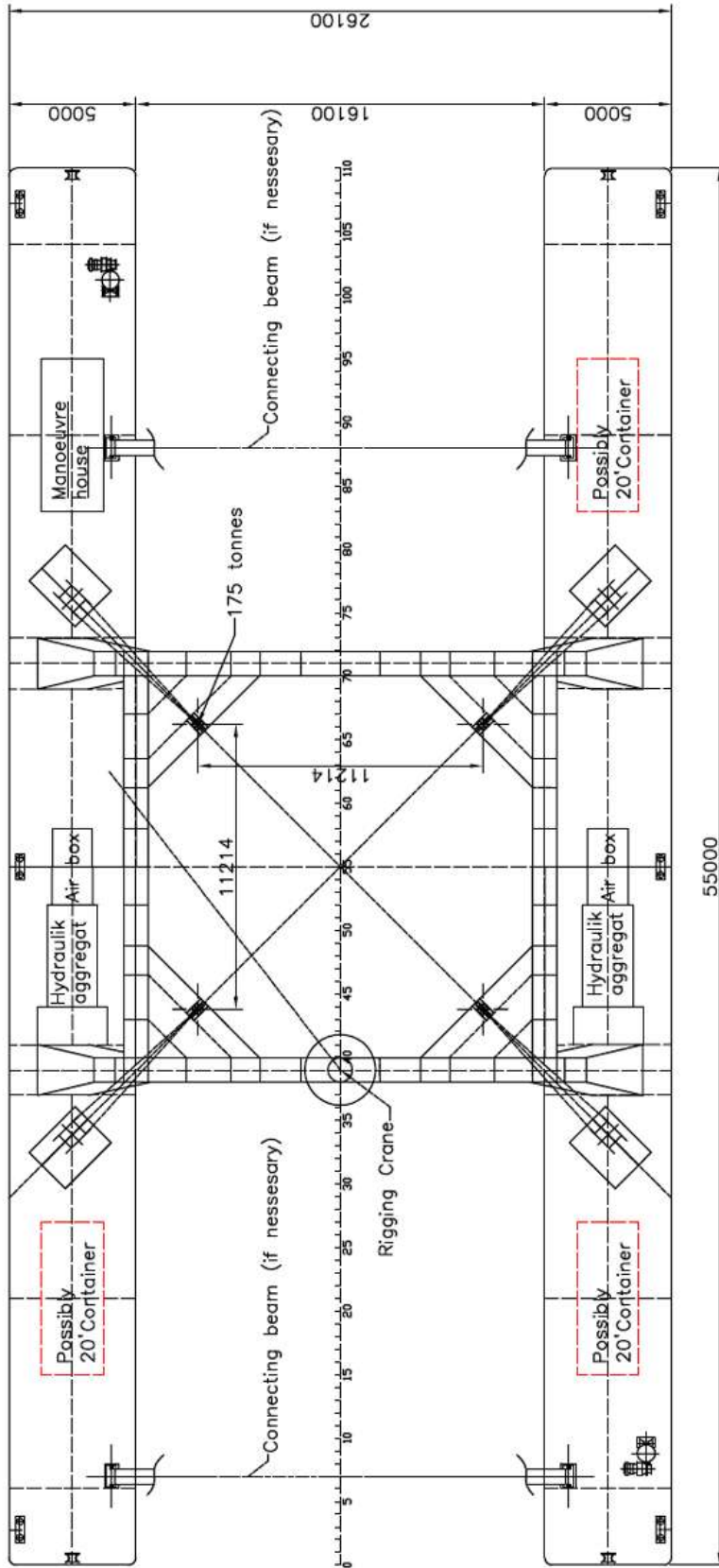
Register Tonnage: 506 Gross / 151 Net.
Build: 1994

Dim:
L overall : 55,000 m
B overall : 26,100 m
Depth moulded: 3,100 m
Draft light: 1,100 m
Draft Loaded (700 t) 2,500 m

CAPACITIES:
4 Hooks
Load in one hook: 175 t
Load in four hooks: 700 t



Frame Spacing: 500 mm



Looking Down

Length: 55.00 m
Breadth: 26.10 m
Seite: 3.10 m
Depth: 1.10 m
Depth with load (700 tonnes)