



Rodson Universal Inc

[www.rodson.com](http://www.rodson.com)

[info@rodson.com](mailto:info@rodson.com)

Ref ad1265

## POTAIN MD2220

Year: 2007  
Capacity: 0 to 30 m = 64 tons  
0 to 40 m = 48.1 tons  
0 to 50 m = 37 tons  
0 to 60 m = 29.7 tons  
0 to 70 m = 25 tons  
0 to 80 m = 22.8 tons

Jib: 80 m  
HUH: 81.3 m

With steel counterweights

With service winch

With climbing frame and hydraulic unit

With mast type R 108A 5.5 meters square and 5.78 meters height

All components to operate manuals, build documentation and certification

In as new delivered condition



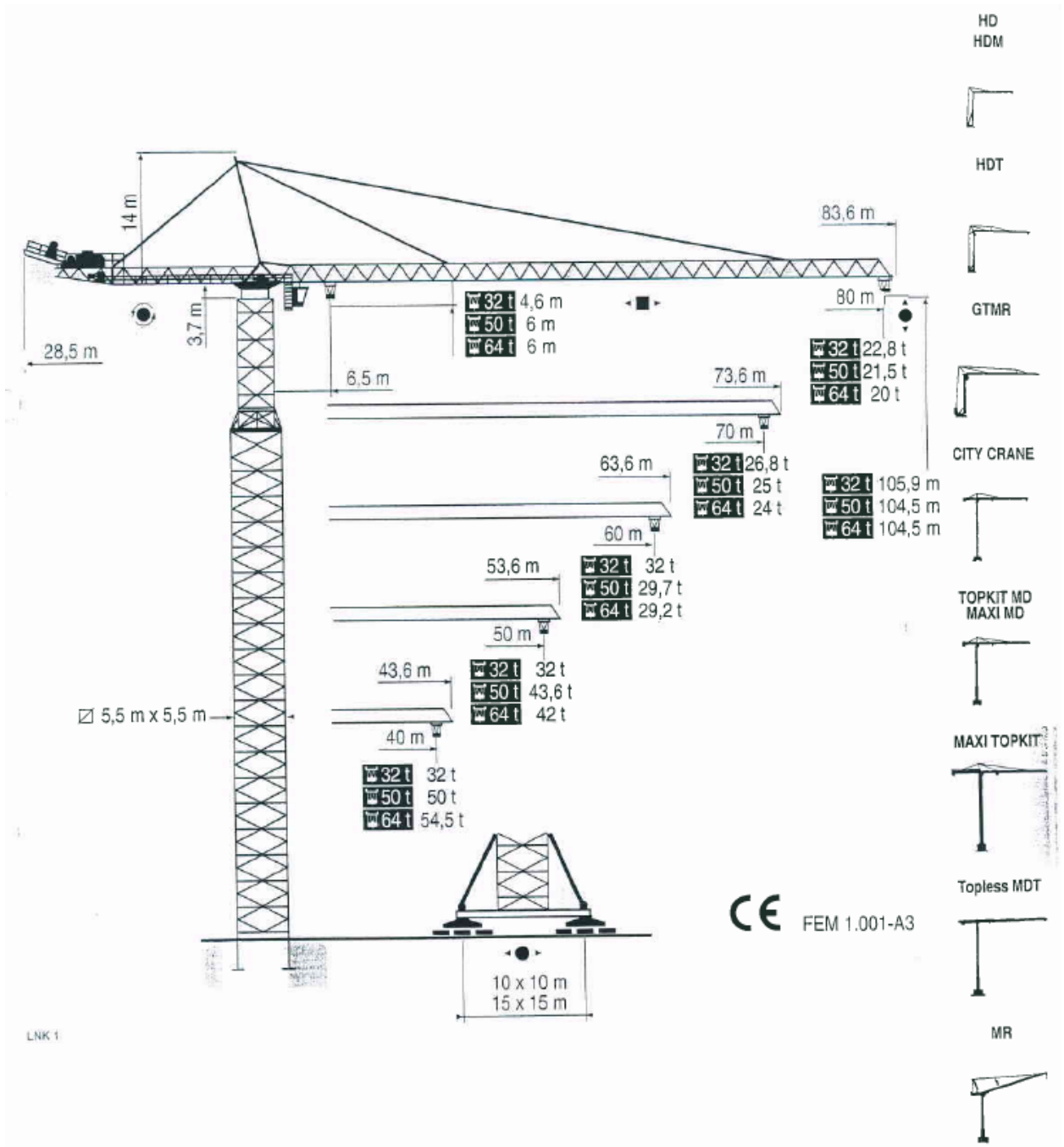


Rodson Universal Inc

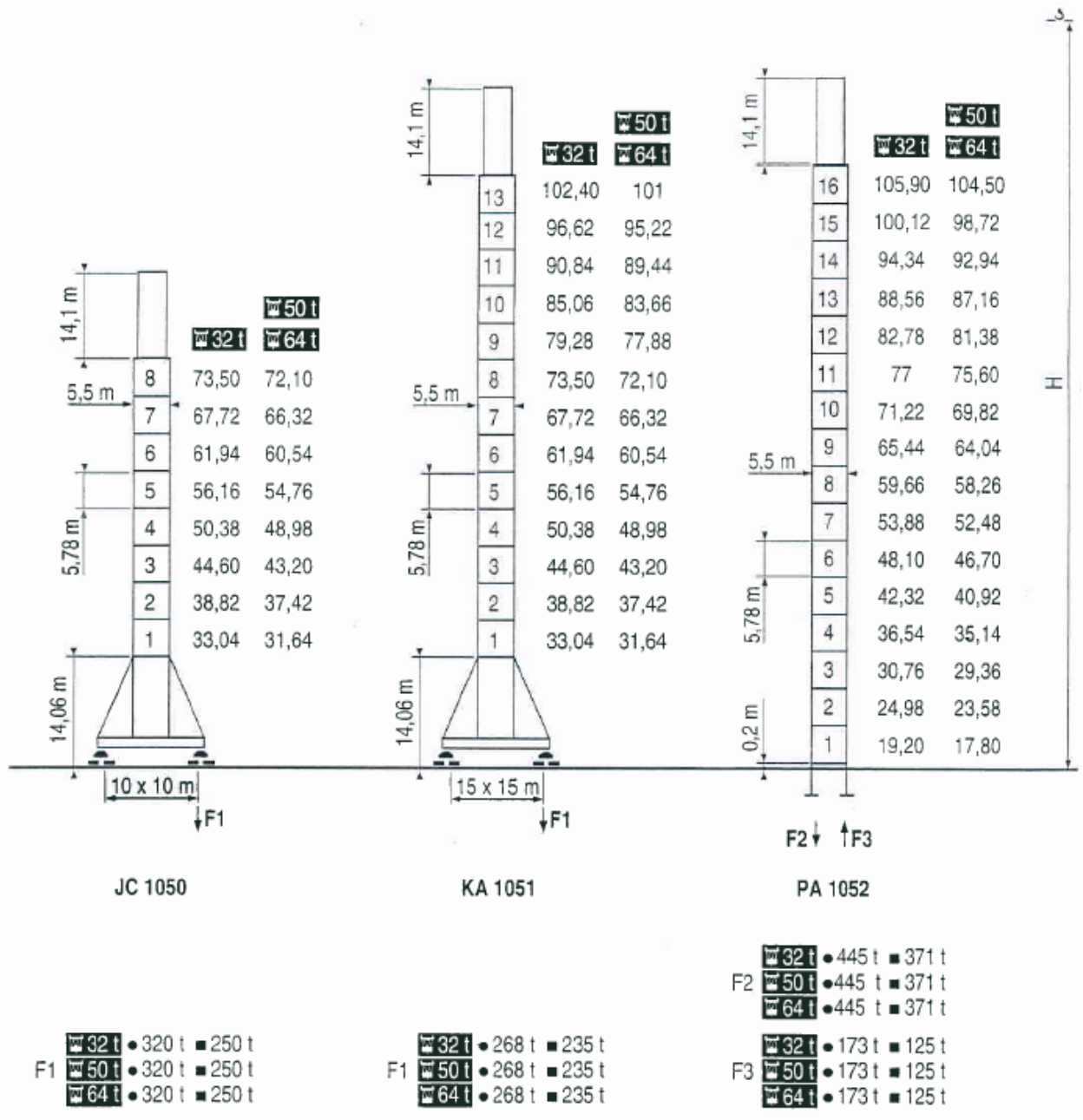
[www.rodson.com](http://www.rodson.com)

[info@rodson.com](mailto:info@rodson.com)





□ 5,5 m x 5,5 m



<b>32 t</b>	40/50/60/70/80 m	6,5 ▶							60	65	70	75	80 m
			32	29,2	26,8	24,7	22,8 t						

	60/70/80 m	6,5 ▶	38,7	40	45	50	55	60	65	68,7	70	75	80 m
			50	48,1	42	37	33	29,7	26,8	25	25	23,3	21,5 t

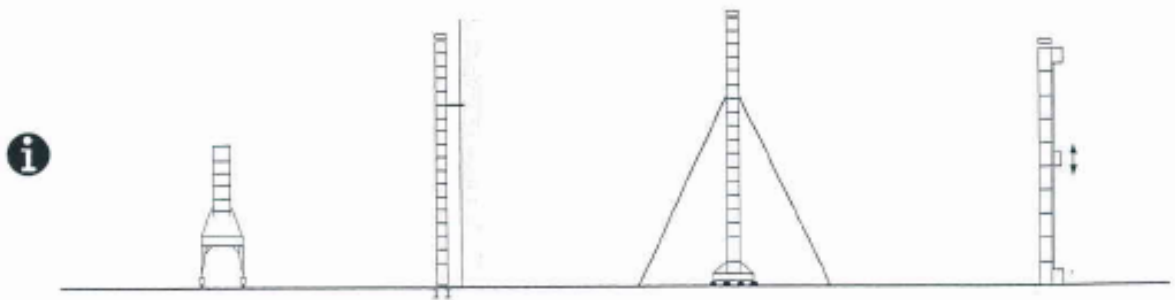
<b>50 t</b>	40/50 m	6,5 ▶			50 m
			44,4	45	50 t
			50	49,3	43,6 t

60/70/80 m	6,5 ▶	30,3	35	40	45	50	54,2	55,8	60	65	70	75	80 m
		64	54,3	46,4	40,3	35,4	32	32	29,2	26,4	24	21,8	20 t

<b>64 t</b>	40/50 m	6,5 ▶			50 m		
			34,8	35	40	45	50 t
			64	63,5	54,5	47,5	42 t

LNK 1

<b>Autres implantations</b>		<b>Mounting possibilities</b>		<b>Altre postazioni</b>	
<b>Aufstellmöglichkeiten</b>		<b>Otras implantaciones</b>		<b>其它安装</b>	



LNK 1

								ch - PS hp	kW			
		120 LMD 80	m/min t	0 → 27,5 16	0 → 55 8	0 → 110 ▽ 4	0 → 13,7 32	0 → 27,5 16	0 → 55 ▽ 8	120	88	374 m > 374
		120 LMD 80 S	m/min t	0 → 22,5 16	0 → 45 8	0 → 90 ▽ 4	0 → 11,2 32	0 → 22,5 16	0 → 45 ▽ 8	120	88	1018m > 1018
		120 LMD 125	m/min t	0 → 17,5 25	0 → 35 12,5	0 → 70 ▽ 6,25	0 → 8,7 50	0 → 17,5 25	0 → 35 ▽ 12,5	120	88	750 m > 750
		120 LMD 160	m/min t	0 → 13,5 32	0 → 27 16	0 → 54 ▽ 8	0 → 6,7 64	0 → 13,5 32	0 → 27 ▽ 16	120	88	660 m > 660
		15 DRC 10	m/min	0 - 3,1 → 32 - 64						14	10,3	
		15 DRC 16	m/min	0 - 1,9 → 20 - 40						14	10,3	
		25 DTV 25	m/min	0 → 11 → 33 → 66			0 → 11 → 33			25	18,4	
		25 DTV 33	m/min	0 → 8 → 25 → 50			0 → 8 → 25			25	18,4	
	RTV		tr/min U/min rpm	0 → 0,65						4 x 25	4x18,4	
			m/min	0 → 16						16 x 4	16 x 3	
CEI 38		IEC 38		kVA								
400V (+6%-10%) 50 Hz				200 kVA			84/534 - 87/405					

LNK 1

note winch 250 LCC-160

Levage Distribution Orientation Translation Surveillance uniquement en descente Conforme aux directives CEE 84/534 et 87/405 sur le niveau acoustique Nous consulter	Hoisting Trolleying Slewing Travelling Lowering super speed In compliance with the EEC 84/534 and 87/405 instructions on noise level Consult us	Sollevamento Distribuzione Rotazione Traslazione Surveillance solo in discesa Conforme alle direttive CEE 84/534 e 87/405 sul livello acustico Consultateci
Heben Katzfahren Schwenken Kranfahren Schnellgang nur für senken Gemäss EWG-Richtlinien 84/534 und 87/405 für den Schall-Leistungspegel Auf Anfrage	Elevación Distribución Orientación Traslación Sobrevelocidad solo en bajada Conforme con las directivas CEE 84/534 y 87/405 sobre el nivel acustico Consultarnos	Elevazione Distribuzione Rotazione Traslazione Sovravelocità solo in discesa Conforme CEE 84/534 - CEE 87/405 声響度規定 請向廠方查詢